

ASSEMBLY INSTRUCTIONS

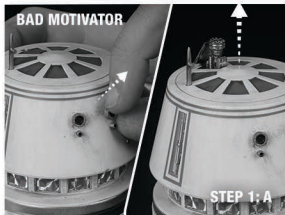
R5-D4 - SIXTH SCALE FIGURE

ATTENTION: PLEASE USE CAUTION DURING ASSEMBLY

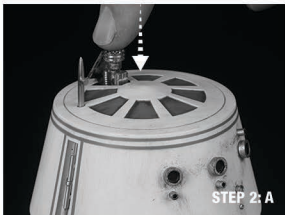
FOR FURTHER ASSISTANCE:

CALL US (WITHIN U.S.): 1-855-SIDESHOW

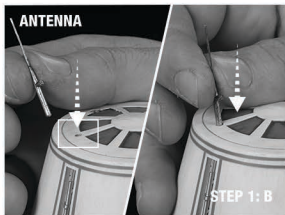
CALL US (OUTSIDE U.S.): 1-805-214-2157



STEP 1: Gently pull the center photo-receptor for the "bad" motivator to pop up from a back access panel.



STEP 2: Push "bad" motivator down until it locks.



STEP 1: Gently friction fit antenna into the top key of the figure.



NOTE: Figure comes with two antennas. Extra antenna is provided if replacement is needed.



SIDESHOW

SIDESHOW/Instructions