

ASSEMBLY INSTRUCTIONS

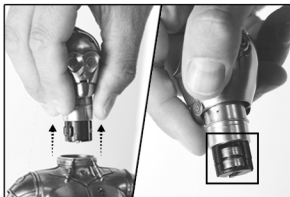
C-3PO - SIXTH SCALE FIGURE

ATTENTION: PLEASE USE CAUTION DURING ASSEMBLY

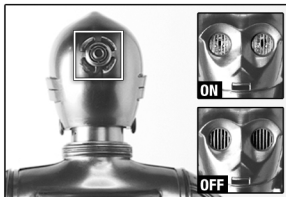
FOR FURTHER ASSISTANCE:

CALL US (WITHIN U.S.): 1-855-SIDESHOW

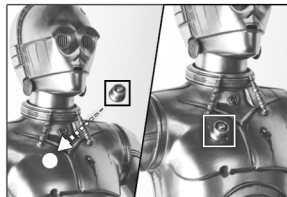
CALL US (OUTSIDE U.S.): 1-805-214-2157



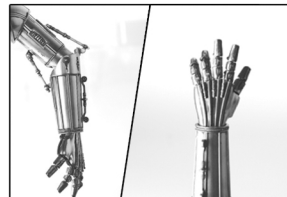
To access the batteries, gently grasp neck and pull up. Remove the white paper tab. **Note:** Make sure to grasp at the neck, not the head or ears.



To switch on the light-up eyes, tap the highlighted area once. Tap again to switch off.



The restraining bolt magnetically attaches in this general area.



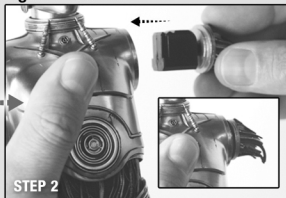
NOTE: Avoid overextending the articulated arm and use caution when handling the articulated fingers.

EXCLUSIVE EDITION: Swap-Out Damaged Shoulder



STEP 1

STEP 1: To remove the regular arm, grasp the figures left shoulder and pull gently.



STEP 2

STEP 2: Place exclusive arm onto figure.



STEP 3

STEP 3: Exclusive arm keys into exclusive shoulder piece.



NOTE: Reverse steps when switching back to regular arm.

*Please note to be gentle, as some parts of the product may be fragile.

READ THE INSTRUCTIONS CAREFULLY BEFORE USING THE PRODUCT

Product uses two (2) LR44 batteries for the eyes (located at the bottom of the neck)

1. Non rechargeable batteries should not be charged.
2. Do not mix different types of batteries.
3. Do not mix new and used batteries.
4. Only the recommended type of batteries should be used.
5. Batteries should be inserted and oriented with the correct polarity.
6. Exhausted batteries should be removed from the product.
7. The battery terminals must not be short-circuited.
8. Batteries should be disposed in an appropriate place.
9. Remove batteries when not in use or discharged.



SIDESHOW

SIDESHOW.COM/Instructions