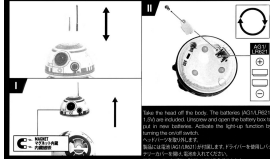


## BB-8

### INSTRUCTION SHEET

**WARNING**  
この製品の取り扱いには注意してください。  
1. 本製品の電源は電池で稼働します。電池の取り扱いには注意してください。  
2. 本製品の電源は電池で稼働します。電池の取り扱いには注意してください。  
3. 本製品の電源は電池で稼働します。電池の取り扱いには注意してください。  
© 2019 Hasbro Toy Company. All Rights Reserved.  
www.hasbro.com www.starwars.jp

#### A. LED LIGHT UP FUNCTION / LEDライトアップ機能について / LED発光機能



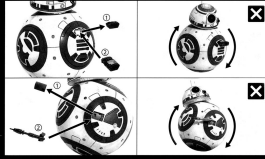
Turn the head of the body. The buttons (ON/OFF) on the back of the head will activate the light-up function. Turn the head of the body to the right to activate the light-up function. Turn the head of the body to the left to deactivate the light-up function.

**CAUTION / ご注意 / 注意!**



Do not tilt the head. Otherwise, the type of battery compartment may get damaged.

#### B. INTERCHANGEABLE PARTS / 差し替え可能なパーツについて / 可換パーツ



Head of the included parts can be used with the main body. (Compatible with BB-8) as shown. Do not use the head of the included parts with the main body. (Not compatible with BB-8) as shown.

**CAUTION / ご注意 / 注意!**



Do not tilt the head. Otherwise, the type of battery compartment may get damaged.

## REY

### INSTRUCTION SHEET

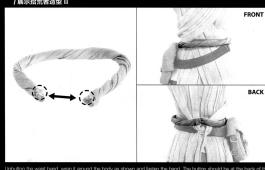
**WARNING**  
この製品の取り扱いには注意してください。  
1. 本製品の電源は電池で稼働します。電池の取り扱いには注意してください。  
2. 本製品の電源は電池で稼働します。電池の取り扱いには注意してください。  
3. 本製品の電源は電池で稼働します。電池の取り扱いには注意してください。  
© 2019 Hasbro Toy Company. All Rights Reserved.  
www.hasbro.com www.starwars.jp

#### A. DISPLAYING SCAVENGER LOOK PART I / 廃品探検者の衣装について PART I



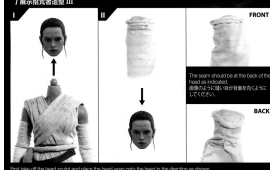
Put the head of the body into the neck hole of the tunic. The head of the body will be visible through the neck hole.

#### B. DISPLAYING SCAVENGER LOOK PART II / 廃品探検者の衣装について PART II



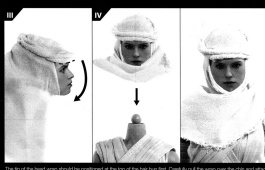
Put the head of the body into the neck hole of the tunic. The head of the body will be visible through the neck hole.

#### C. DISPLAYING SCAVENGER LOOK PART III / 廃品探検者の衣装について PART III



Put the head of the body into the neck hole of the tunic. The head of the body will be visible through the neck hole.

#### D. PUTTING ON THE GOGGLES / ゴーグルの装着について / 廃品探検者のゴーグル



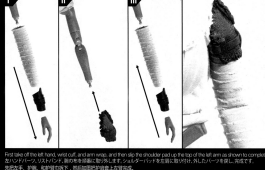
Put the head of the body into the neck hole of the tunic. The head of the body will be visible through the neck hole.

#### E. WEARING THE SHOULDER PAD / ショルダーパッドについて / 廃品探検者のショルダーパッド



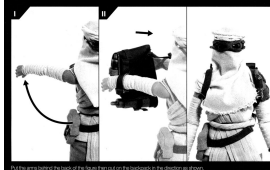
Put the head of the body into the neck hole of the tunic. The head of the body will be visible through the neck hole.

#### F. WEARING THE BACKPACK / バックパックについて / 廃品探検者のバックパック



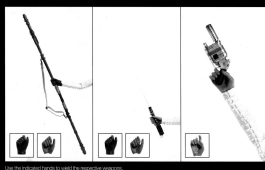
Put the head of the body into the neck hole of the tunic. The head of the body will be visible through the neck hole.

#### G. WEARING THE WEAPONS / 武器の装着について / 廃品探検者の武器



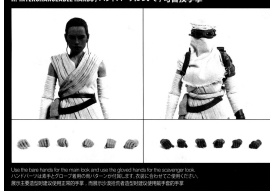
Put the head of the body into the neck hole of the tunic. The head of the body will be visible through the neck hole.

#### H. INTERCHANGEABLE HANDS / ハンドパーツについて / 可換手



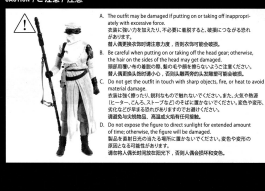
Put the head of the body into the neck hole of the tunic. The head of the body will be visible through the neck hole.

#### CAUTION / ご注意 / 注意!



Do not tilt the head. Otherwise, the type of battery compartment may get damaged.

#### CAUTION / ご注意 / 注意!



Do not tilt the head. Otherwise, the type of battery compartment may get damaged.